

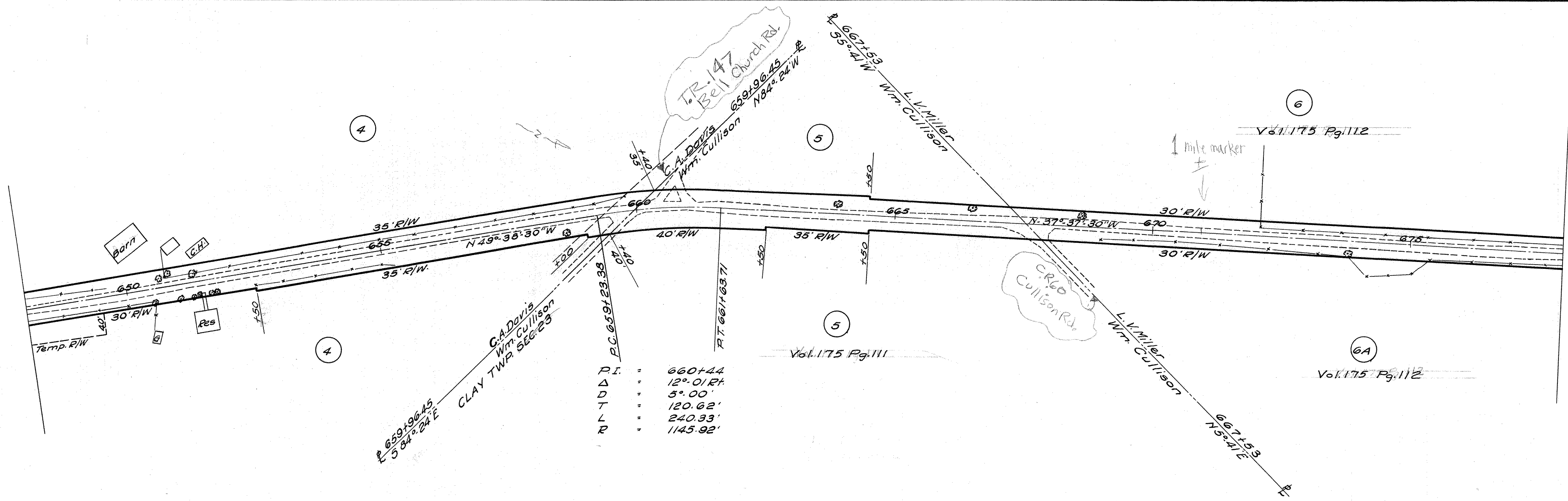
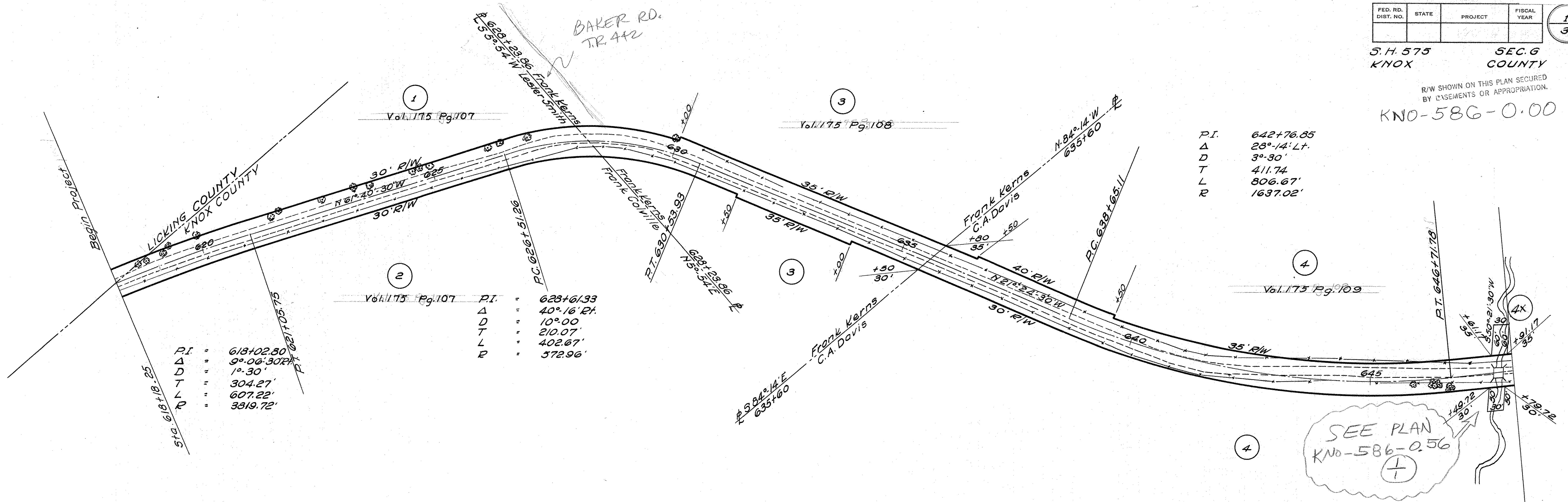
FED. RD. DIST. NO.	STATE	PROJECT	FISCAL YEAR

S.H. 575 KNOX SEC. 6 KNOX COUNTY

R/W SHOWN ON THIS PLAN SECURED BY EASEMENTS OR APPROPRIATION.

KNO-586-0.00

PI. 642+76.85  
Δ 28°-14' Lt.  
D 3°-30'  
T 411.74  
L 806.67'  
R 1637.02'



FED. RD. DIST. NO.	STATE	PROJECT	FISCAL YEAR

2  
3

S.H. 575  
KNOX COUNTY  
KNO-586-0.00  
R/W SHOWN ON THIS PLAN SECURED  
BY EASEMENTS OR APPROPRIATION.

SEC. 6  
702+67.10  
12°54' Lt.  
3°30'  
185.09  
368.57  
1635.13

702+22.2  
N 82°16' W  
Vol. 175 Pg. 115

705  
N 66°55'30" W  
Vol. 175 Pg. 116

704+96.5  
N 74°51' E  
Vol. 175 Pg. 116

704+50.57  
R.T. 704+50.57  
Loragon  
Millie Hancock

704+50.57  
R.T. 704+50.57  
Loragon  
Millie Hancock

704+50.57  
R.T. 704+50.57  
Loragon  
Millie Hancock

704+50.57  
R.T. 704+50.57  
Loragon  
Millie Hancock

704+50.57  
R.T. 704+50.57  
Loragon  
Millie Hancock

704+50.57  
R.T. 704+50.57  
Loragon  
Millie Hancock

704+50.57  
R.T. 704+50.57  
Loragon  
Millie Hancock

704+50.57  
R.T. 704+50.57  
Loragon  
Millie Hancock

704+50.57  
R.T. 704+50.57  
Loragon  
Millie Hancock

704+50.57  
R.T. 704+50.57  
Loragon  
Millie Hancock

704+50.57  
R.T. 704+50.57  
Loragon  
Millie Hancock

7  
Vol. 175 Pg. 113

8  
Vol. 175 Pg. 114

10  
Vol. 175 Pg. 115

11  
Vol. 175 Pg. 116

12  
Vol. 175 Pg. 117

10A  
Vol. 175 Pg. 115

P.I. = 722+98.07  
Δ = 13°34'30" Rt.  
D = 1°30'  
T = 454.67'  
L = 905.00'  
R = 3819.72

2 mile marker

T.R. 148  
DUTY Rd.

55°51' W  
730+63.4  
Millie Hancock  
Noah Martin

P.T. 727+48.4  
O.F.G. 3" Line

E.P. 51+00  
Millie Hancock

N 6°24' E  
723+93.13

P.C. 718+43.40

P.I. = 682+47.50  
Δ = 14°10' Lt.  
D = 6°00'  
T = 118.67'  
L = 236.11'  
R = 954.93'

529°57' W  
681+40.33  
R.C. 680+22.83  
L.V. Miller  
Ailie Cullison

P.T. 682+64.94

P.N. 121 E  
679+23.77  
Burkholder

DEC 14 1944

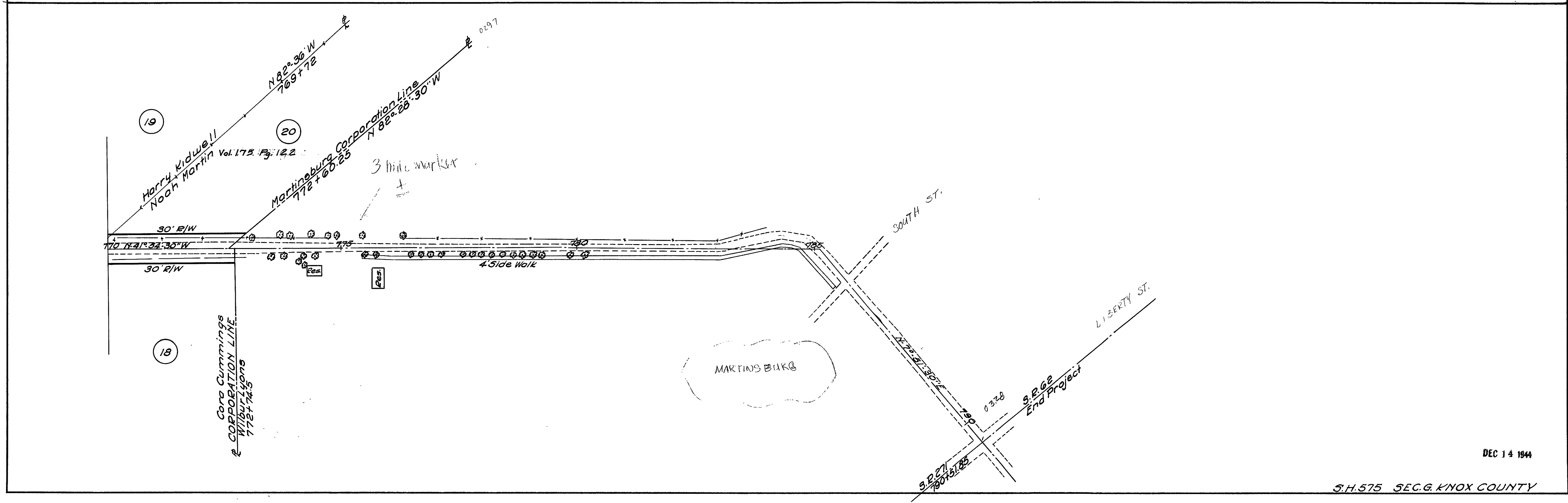
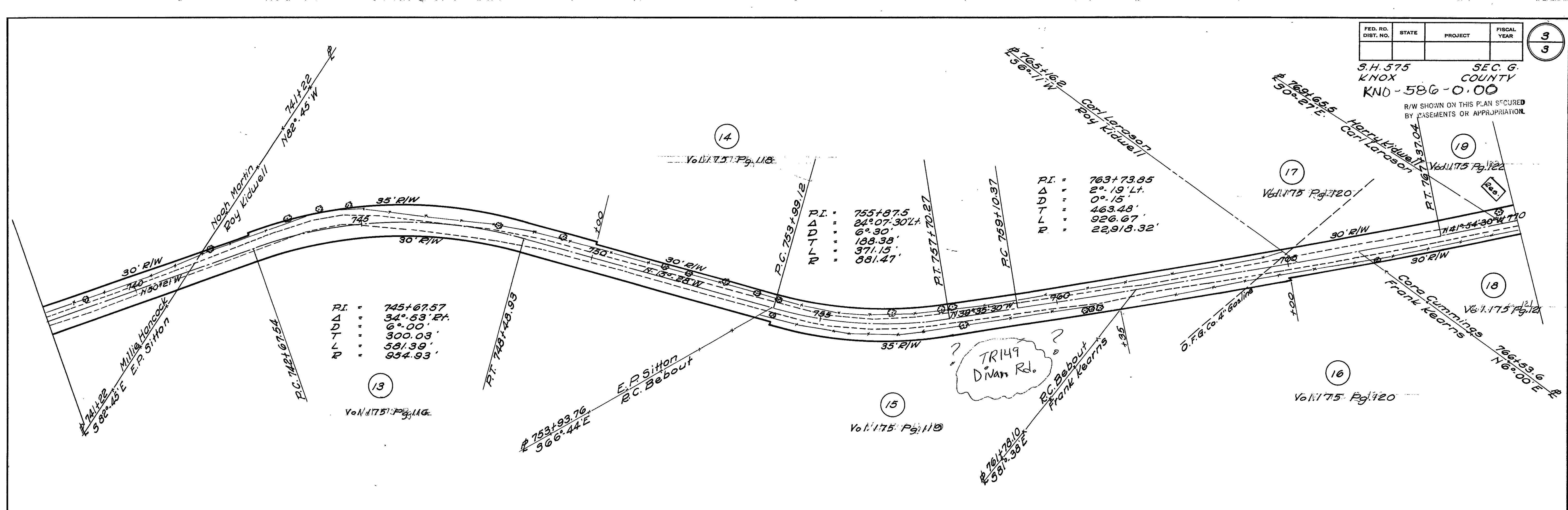
S.H. 575 SEC. 6 KNOX COUNTY

FED. RD. DIST. NO.	STATE	PROJECT	FISCAL YEAR

3  
3

S.H. 575  
KNOX COUNTY  
KNO-586-0.00

R/W SHOWN ON THIS PLAN SECURED  
BY EASEMENTS OR APPROPRIATION



DEC 14 1944

S.H. 575 SEC. G. KNOX COUNTY